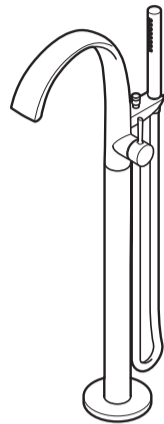


# TOTO

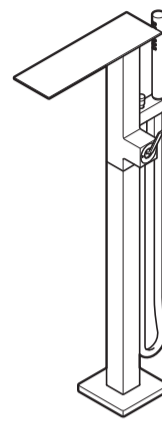
**CN 铜合金立式单柄双控浴缸水嘴**

**EN Floor Standing Bathtub Filler**

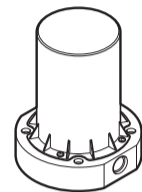
安装本产品时必须与 ( TBN01105型 ) 配套使用。  
This floor standing bathtub filler requires both a faucet (main body) and a tub filler rough (Model TBN01105).



**TBP01301型**  
TBP01301 Type



**TBP02303型**  
TBP02303 Type



**TBN01105型**  
TBN01105 Type

**CN** ◆ 为了能够发挥产品功能，请细读本安装说明书的内容，并正确地安装。  
安装后，请务必向客户仔细地说明使用方法。

**EN** ◆ Install this product according to this Installation Manual so that the product functions properly.  
When the installation is over, fully explain how to use the product to the customer.

# 安全上的注意事项 (为了安全起见, 请务必遵守)

安装前, 务请细读本「安全上的注意事项」的内容, 并正确地安装。

● 为了安全、正确地使用产品, 防止给您或者他人的人身及财产安全造成损失, 此说明书采用了各种标志。各标志与含义如下:

● 务必遵守的内容和种类均用下列所示的标志分别进行说明。

	<b>警告</b> 此标志表示无视此标志的内容, 进行误操作的话, 可能导致人员死亡或重伤。
	<b>注意</b> 此标志表示无视此标志的内容, 进行误操作的话, 可能造成人员伤害或物质财产损失。

	表示不可行, 「禁止」之意。 左图表示「禁止拆解」。
	表示必须「强制」实行的内容。 左图表示「必须实行」。

<b>警告</b>	
	<b>冷热水管勿装反。</b> 否则可能因使用冷水侧时吐热水而造成烫伤。
	<b>供热水温度不得超过90°C, 建议供热水温度为60°C. 供热水管请勿使用蒸汽。</b> 否则可能会造成产品使用寿命缩短、损坏、烫伤以及因发生漏水而造成弄湿家具等财产损失。
	<b>非专业维修人员绝对不能进行说明书记载检修项目外的产品拆解、修理和改造。</b> 否则, 可能因产品性能受损导致烫伤、受伤, 或因漏水而引起家具浸湿等财产损失。

<b>注意</b>	
	<b>不要施加强力或冲击</b> 否则可能会造成破损, 以及因发生漏水而造成的家具浸湿等财产损失。
	<b>请勿在室外或可能结冰的地方使用。</b> 否则可能会造成破损, 以及因发生漏水而造成的家具浸湿等财产损失。
	<b>请务必用适当的固定螺丝来将埋入本体安装在具有强度的符合强度要求的地面上 (建筑结构体) 上。</b> 如果固定在强度不足的地面上, 就会造成产品本体脱落、损坏地面、受伤以及因发生漏水而造成家具浸湿等财产损失。
	<b>将硅胶涂敷在树脂套与地板之间的间隙, 以确实施行防水处理。</b> 否则可能因发生漏水而造成家具浸湿等财产损失。

# Safety Precautions (Follow all precautions carefully to ensure a safe installation.)

Please read these Safety Precautions before installation work in order to ensure a proper installation.

● This manual employs various symbols in order to indicate safe and proper installation and to prevent injuries to people or property damage. The symbols and meanings are as follows:

● The actions you must observe are classified into the following symbols; their meanings are explained.

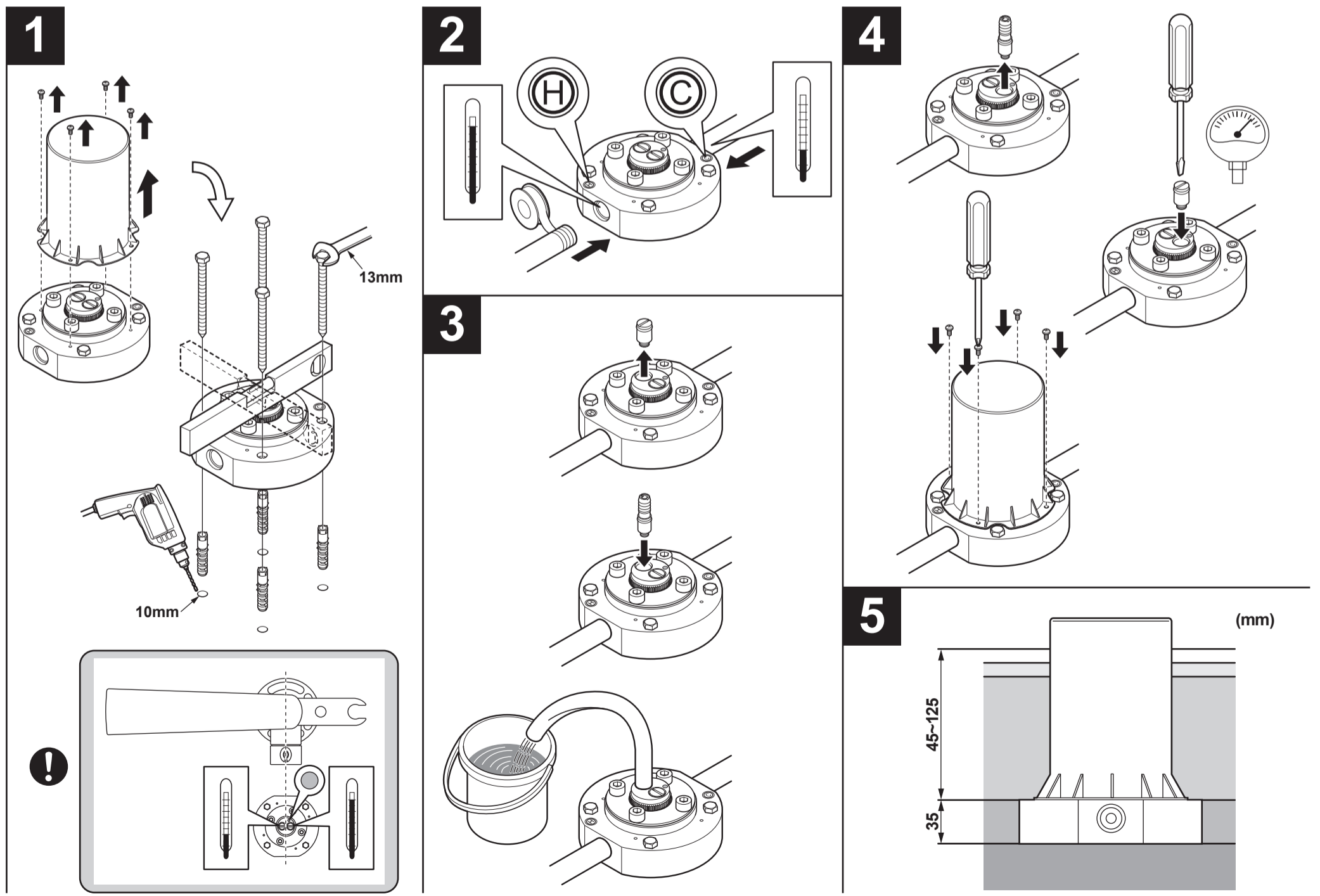
	<b>WARNING</b> This symbol means that if the action indicated by the symbol is ignored or mishandled, death or serious injury may occur.
	<b>CAUTION</b> This symbol means that if the action indicated by the symbol is ignored or mishandled, injury or property damage may occur.

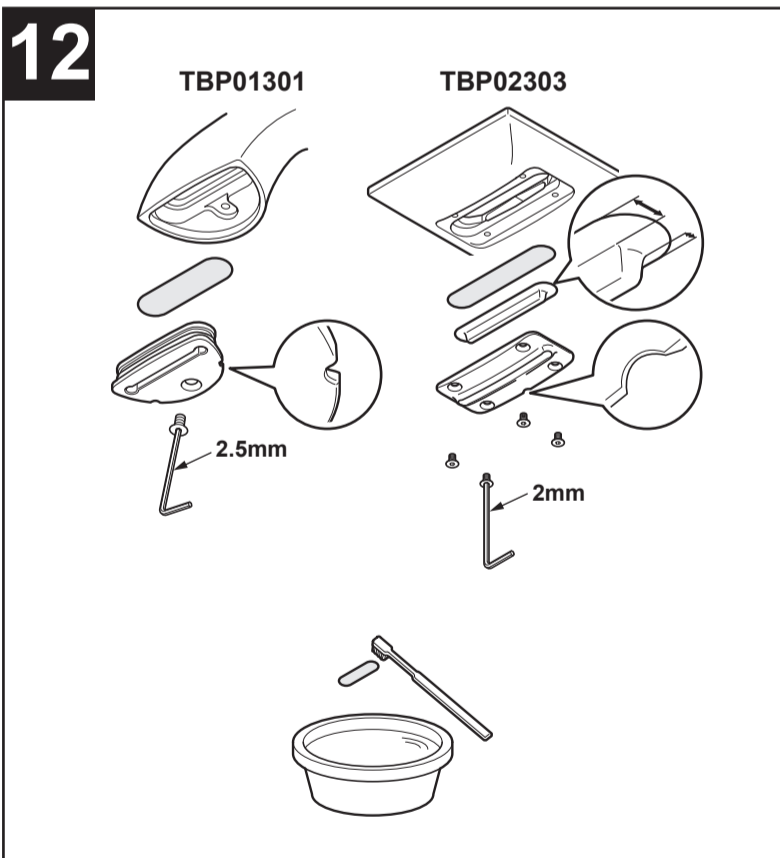
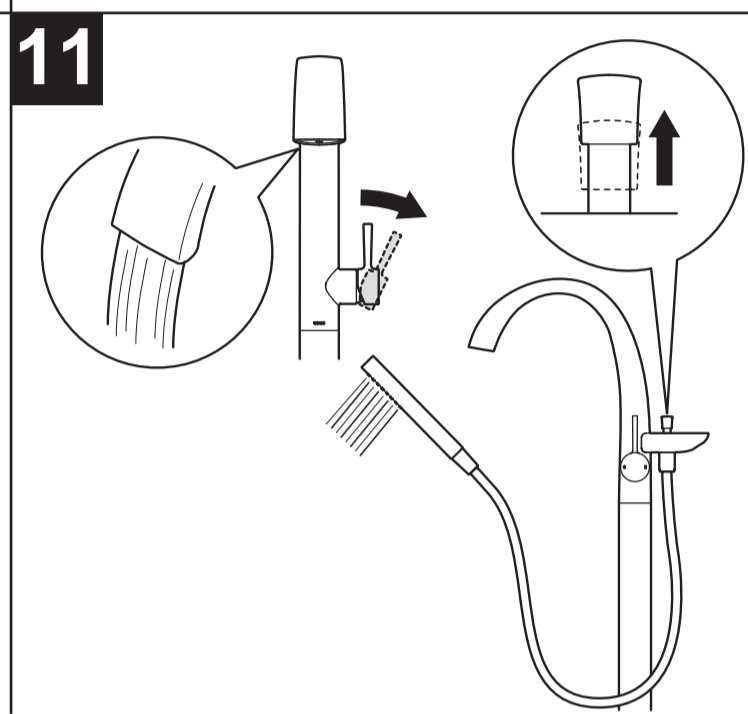
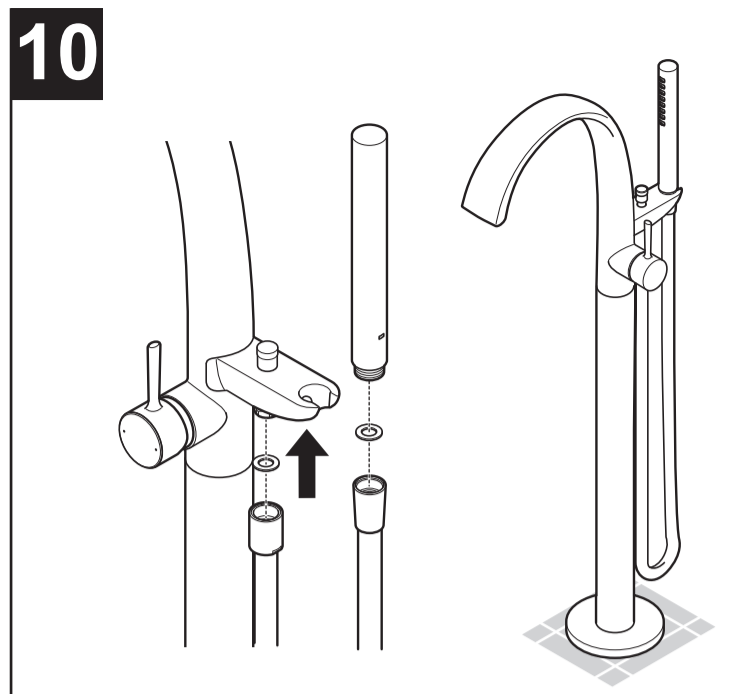
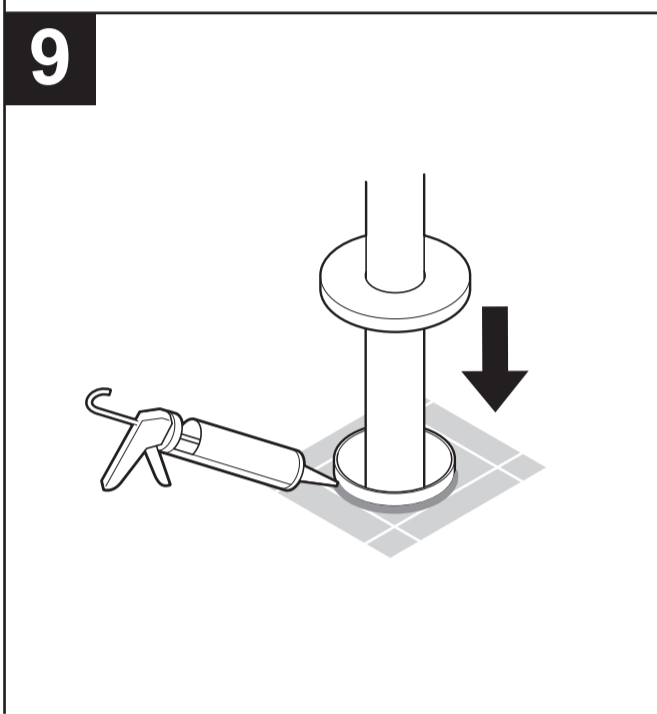
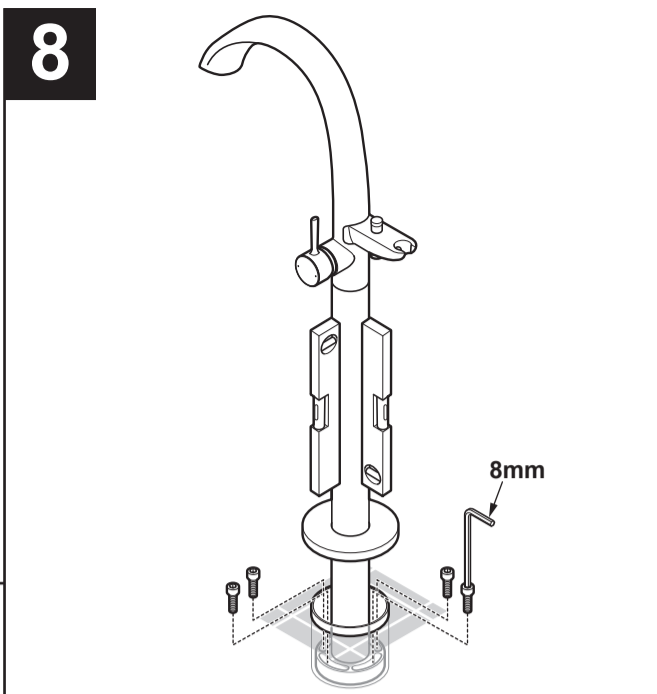
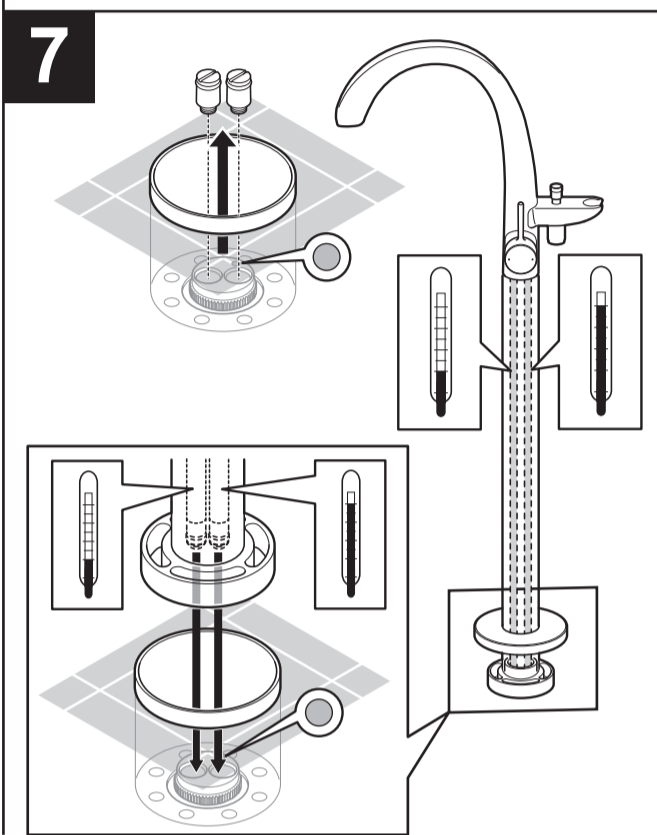
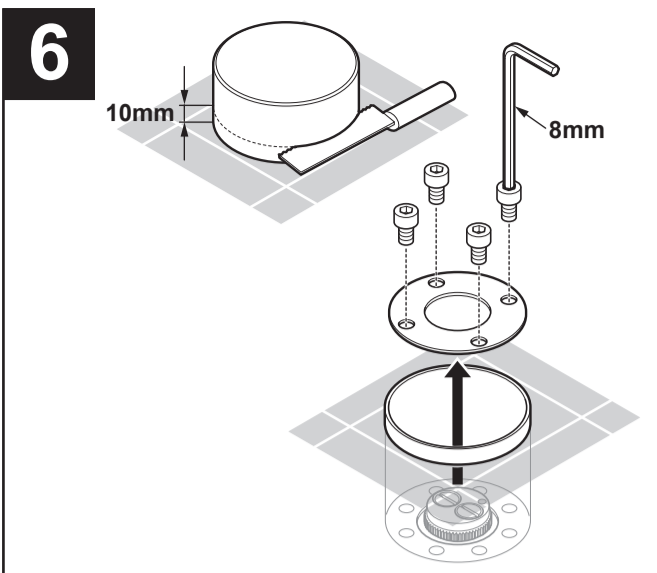
	Actions that you must NOT do are indicated as "Prohibited". The left figure signifies that "Disassembly is Prohibited".
	Actions that you must do without fail are indicated as "Mandatory". The left figure signifies that it is "Mandatory".

<b>WARNING</b>	
	<b>Do not reverse the hot and cold water inlets.</b> If reversed, turning on the cold water will instead result in hot water that may scald you.
	<b>Hot water supply temperature must not exceed 80°C.</b> If you use the water at a temperature higher than 80°C, the water may scald you and may shorten the life of the product or damage the product and cause leakage resulting in water damage to property.
	<b>Do not disassemble or remodel the product in any way other than what is described in this manual.</b> Improper modifications may cause scalding water that can injure you and may damage the product and cause leakage resulting in water damage to property.

<b>CAUTION</b>	
	<b>Do not subject the product to strong force or impact.</b> Strong forces or impacts may damage the product and cause leakage resulting in water damage to property.
	<b>Do not use the product in places that have freezing temperatures.</b> Freezing may damage the product or parts and cause leakage resulting in water damage to property.
	<b>Using the appropriate tub filler rough setscrews, mount the tub filler rough on the floor or structure that is strong enough to bear the product's weight.</b> If the tub filler rough is anchored on a floor that cannot support it, the faucet (main body) may break off or the floor may collapse, which may injure you and cause leakage resulting in water damage to property.
	<b>Apply silicone to thoroughly waterproof the clearance between the plaster guard and the floor.</b> Water may leak on household articles and cause water damage to property.

[CN] TBP01301型 [EN] TBP01301 Type	[CN] TBP02303型 [EN] TBP02303 Type	[CN] TBN01105型 [EN] TBN01105 Type	[CN] 浴缸安装示例 [EN] Example bathtub
(mm) 	(mm) 	(mm) 	(mm) [CN] • 铜合金立式单柄双控浴缸水嘴：TBP01301型 • 埋入本体：TBN01105型 • 浴缸：PJYD2200PW型 [EN] • Floor Standing Bathtub Filler: Model TBP01301 • Mounting hardware: Model TBN01105 • Bathtub: Model PJYD2200PW  [CN] ※因产品型号不同，图片与实物可能稍有差异。 [EN] *Actual product may vary in appearance from drawings depending on the model





**安装前的须知**

- 水嘴吐水口的位置取决于埋入本体，因此安装前请充分注意埋入本体的安装位置。
- 供水压力超过1.0MPa时，请务必使用市场销售的减压阀，将供水压力降至0.5MPa。为了让客户能更舒适地使用本产品，推荐的供水压力为0.5MPa。
- 高压、大流量状态下使用，切换时的手感可能会加重。此时，请先用手柄调小流量，在进行转换操作。
- 为防止误操作而导致的烫伤，冷水水压必须高于或等于热水水压。如必须给热水侧加压时，热水侧压力也必须低于冷水水压。
- 为了防止烫伤，来自热水供给设备的热水温度设定不得超过60°C。为了确保舒适的吐水温度，建议设定于60°C进行使用。
- 为了减少供热设备到水嘴间的阻力，请按最短距离进行排管。水管须包裹保温材料。
- 包装产品之前，因执行通水试验，可能会在产品内部留有残水，但是产品性能上毫无问题。

**埋入本体的安装**

- 1** 用十字形螺丝刀拆下埋入本体的树脂套。拆下的树脂套和螺丝还需要使用，请注意不要遗失。将埋入本体水平地安装并固定。



无●标识的插销表示水嘴的方向。  
确认浴缸的安装位置并大约决定安装方向后固定埋入本体。  
※固定水嘴本体时可调节水嘴的方向。

**给水管的连接**

- 2** 给水管连接时，为了防止接反供热水管，请确认埋入本体C·H标记后，将缠绕了密封带的给水管连接至埋入本体上。

**请务必执行供冷水管和供热水管内部的清扫**

- 3** 请另行准备市场销售的软管与水桶。将软管连接到埋入本体上，然后再将供冷水管和供热水管内的垃圾或沙土等冲洗干净。



否则因供冷水管和供热水管内的垃圾或沙土堵塞滤网而导致发生下列情况。  
①吐水量少      ②难以调节温度

**耐压试验**

- 4** 执行耐压试验，以确认给水管连接部有无漏水，然后安装树脂套。在最大压力为1.6MPa（静压力）的状态下最长可施加一分钟的压力。

**地面的铺设**

- 5** 按树脂套侧面标注的地面高度完成地面浇筑。请注意不要使灰浆等混入树脂套内侧。

**切割树脂套**

- 6** 先将树脂套切割到与完成地面10mm高度之处，然后再从埋入本体上拆下插销、螺栓以及装饰盖。



铺设地面超过标志高度时，将无法正常地安装埋入本体的装饰盖等，因此，必须事先周密地计划地面铺设方案。

**安装水嘴本体**

- 7** 为了防止接反给水管，请在将水嘴本体安装在埋入本体时注意水嘴本体的安装方向。
- 8** 调整水嘴方向到与浴缸相配合的位置，然后在保持水嘴本体垂直的情况下用包装箱内附带的螺栓固定水嘴本体。确认水嘴本体有无晃动，然后将手柄置于关闭状态下执行通水，以确认连接部无漏水。

**嵌缝处理**

- 9** 将硅胶涂敷在树脂套与地面之间的间隙，执行防水处理，然后将树脂套下降到完成地面。

**手持花洒·花洒软管的安装**

- 10** 确认在密封圈已安装的情况下安装花洒软管与手持花洒，完成施工。

**吐水确认**

- 11** 打开管道总阀，确认水嘴和手持花洒是否正常吐水。同时，请确认连接部件有无漏水。

**清扫吐水口**

- 12** 吐水确认后，请务必清扫吐水口。若吐水口堵塞，不仅会减小流量，而且会造成温度难以调节等问题，导致产品无法充分发挥应有的功能。请向客户说明需要定期清扫。



将一字形螺丝刀等的尖端细长物品插入凹槽内而取出吐水口。此时，请注意不要损伤水嘴本体。

**规格**

使用压力范围	: 最大	1.0 MPa (静压力)
	: 最小	0.05 MPa (流动压)
推荐使用压力	:	0.1 - 0.5 MPa (流动压)
测试压力	:	1.6 MPa (静压力)
热水温度	:	最高 90 °C
推荐供水温度	:	60 °C

**Before Installation**

- Since the position of the spout opening depends on the mounting position of the tub filler rough, pay enough attention to the mounting position.
- If the water supply pressure exceeds 1.0 MPa, reduce the pressure to about 0.5 MPa using a commercially available pressure reducing valve.  
We recommend a water supply pressure of about 0.5 MPa for comfortable use of the faucet.
- If you use the product at a large flow rate because the water pressure is high, etc., you may feel extra resistance using the diverter valve.  
In such case, reduce the flow rate from the handle.
- In order to prevent scalding due to unsafe operation, the cold water supply pressure must be set higher than or equal to the hot water supply pressure.  
If increasing pressure on the hot water side, make sure the hot water supply pressure side is set lower than the cold water side.
- In order to prevent scalding, set the temperature of the hot water in the hot-water supply less than 60°C.  
For a comfortable water temperature, we recommend that you set it to 60°C.
- Connect the hot-water supply pipe at a minimum length from the water heater in order to reduce resistance and make sure to wrap the water supply pipe with thermal insulation.  
Water may remain in the product from flow tests conducted before the product is packaged, this does not indicate that something is wrong with the product.

**Installation of the tub filler rough**

- 1** Remove the plaster guard of the tub filler rough using a Phillips screwdriver. Since the plaster guard and the screws will be used later, put them in a safe location where they will not be lost.  
Install and anchor the tub filler rough so that it is level.



The plug without the ● mark faces the spout.  
Confirm the position of the bathtub, roughly decide the installing direction and then anchor the tub filler rough.  
\*When anchoring the faucet main body, the direction of the spout is adjustable.

**Plumbing**

- 2** When connecting pipes, use sealant, confirm the C/H marks on the tub filler rough so that the cold-water pipe and the hot-water pipe are not inversely connected, and connect the piping to the tub filler rough.

**Clean the inside of cold-/hot-water supply pipes**

- 3** Connect the hose joint and a commercially available hose to the tub filler rough, clean the inside of the C/H water supply pipes and flush out debris and sand remaining in the pipes.



If the inside of the C/H pipes is not clean, the debris and sand in the C/H pipes will clog the filter and the following phenomenon will occur.

- (1) Decreased/too little water volume.
- (2) Reduced functionality of temperature control

**Conducting the durability (pressure) test**

- 4** Conduct a durability (pressure) test, make sure that no water leaks from the pipe connections and set the plaster guard.  
The pressure can be applied at a maximum 1.6 MPa (static) for up to 1 min.

**Finishing the floor**

- 5** Finish the floor so that it is within the finishing range indicated on the side of the plaster guard.  
Pay attention not to get mortar, etc. inside of the plaster guard.

**Cutting the plaster guards**

- 6** Cut the plaster guard at a height of 10 mm from the finished floor surface and remove the plug, the bolt and the blocking lid from the tub filler rough.



If the finished floor exceeds the finishing range, the cover of the faucet main body, etc. cannot be mounted properly, therefore make arrangements beforehand about the floor finishing.

**Mount the faucet main body**

- 7** In order to prevent reversed piping, pay attention to the direction of the faucet main body when mounting the faucet main body onto the tub filler rough.
- 8** Adjust the direction of the spout in relation to the bathtub and anchor the faucet main body using the included bolts. Confirm that the faucet main body is vertical.  
Check the faucet main body for looseness and make sure that water does not pass through the product or leak from the connections when the handle is closed

**Caulking**

- 9** Apply silicone caulk to waterproof the clearance between the plaster guard and the floor, and lower the plaster guard down to the finished floor surface.

**Mounting the hand shower and hose**

- 10** Make sure that the gasket is mounted adequately, then mount the shower hose and the hand shower. This completes product installation.

**Testing the water supply connections**

- 11** Turn on the water supply and confirm that water comes out from the spout and shower.  
Check the around the hose connections and clearances for any water leakage.

**Cleaning the spout opening**

- 12** After testing the water supply connections, clean the spout opening.  
If the spout opening clogs, the flow rate may decrease or the temperature control may not work effectively. This may cause the product to not function as expected.  
Please explain to the customer that the spout opening must be cleaned periodically.



Remove the spout opening by inserting a flathead screwdriver or similar tool into the notch.  
Avoid damaging the faucet main body during removal.

**Specifications**

Operating pressure range	: Max	1.0 MPa
	: Min	0.05 MPa
Recommended Operating pressure	:	0.1 - 0.5 MPa
Test pressure	:	1.6 MPa
Hot water temperature	:	Max. 80 °C
Recommended hot water temperature	:	60 °C